



ACADEMIC CULTURE IN THE U.S.



Lysbet Murray, Assistant Director
Office of Academic Enrichment

WELCOME TO UD!

Topics for this session:



- **Registration issues**
- **Types of classroom environments**
- **Classroom expectations**
- **Coursework**
- **General expectations**
- **Important resources**

Registration Issues

- YOU are responsible for your schedule. You can make changes through **February 23** (“free drop/add”).
- Full-time status is very important: *at least 12 credits every semester.*
- **YOUR ADVISOR IS VERY IMPORTANT.** MAKE NO CHANGES WITHOUT DISCUSSING THEM WITH YOUR ADVISOR **FIRST.**
- **OISS IS VERY IMPORTANT.** MAKE NO CHANGES THAT AFFECT YOUR ACADEMIC STATUS WITHOUT DISCUSSING THEM WITH OISS **FIRST.**
- Grading: 4-point system (4=A, 3=B, 2=C, 1=D, 0=F).

Types of Classroom Environments



Classroom Expectations

SYLLABUS:

- **Contact information**
- **Office hours**
- **Class policies**
 - **Attendance**
 - **Assignments**
 - **Quizzes & exams**
 - **Class participation**
- **Schedule (including exams)**



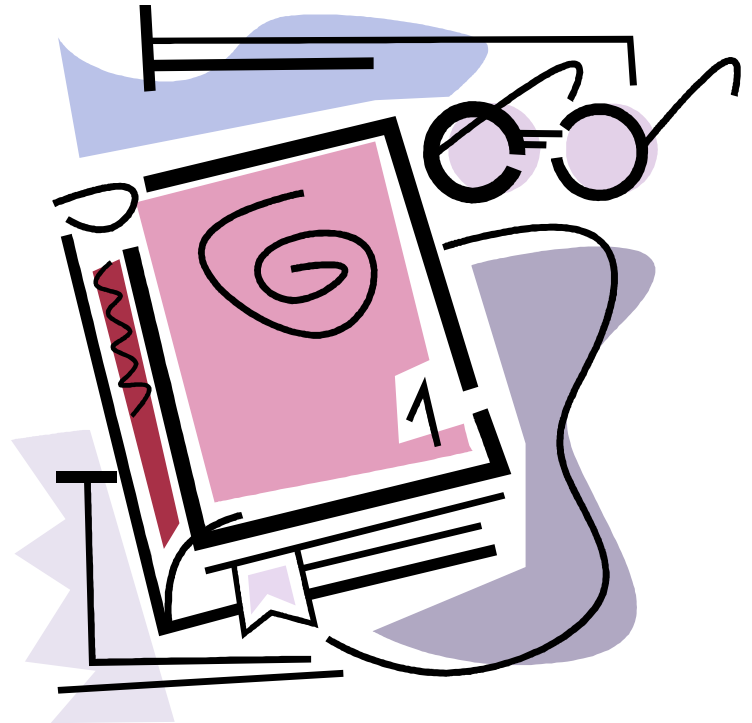
Coursework

- **What are exams like?**
 - Objective
 - Short answer/essay
 - Problem-solving



Coursework

- **ACADEMIC HONESTY**
 - Plagiarism
 - Fabrication
 - Cheating
 - Academic misconduct



Coursework

- **Study skills: online workshops—study habits for the American classroom**
 - Note-taking
 - Reading a textbook
 - Studying strategies
 - Test-taking



<http://www.udel.edu/AEC-workshop/>

Coursework

Working in groups



Presentations

General Expectations

- Create your own understanding: *ACTIVE learning*
- Practice Time Management (also an [online workshop](#))
- Understand your workload—American expectations
- Be assertive: freedom of expression is assumed (you CAN disagree)



Important Resources

- [Office of International Students & Scholars](#)
- Your advisor
- Your professors and teaching assistants (TAs)
- [Office of Academic Enrichment](#)
- [UD Libraries](#)
- [Writing Center](#)
- [Math Tutorial Lab](#)
- [Counseling Center](#)

Thank you!

Feel free to contact me with questions or concerns:

Lys Murray

831-3025

lysbet@udel.edu

Office of Academic Enrichment

148-150 S. College Ave.

